

## MonDak Heritage Center

120 3rd Ave SE  
Sidney, MT. 59270  
Phone: 406-433-3500  
Fax: 406-433-3503



NOTE new email!  
Email: [mdhc@richland.org](mailto:mdhc@richland.org)  
[www.mondakheritagecenter.org](http://www.mondakheritagecenter.org)

### Hours

Tuesday - Friday 10am - 4pm  
Thursday evening 4pm - 7pm  
Saturdays 1pm - 4pm



*Please check if your Membership needs to be renewed. You will find the expiration on the mailing label.*

### Where Art & History Meet

**Staff:** Sandy Turner - Center Coordinator,  
Leann Pelvit - Administrative Assistant,  
Debi Fox - Experience Works

**Board of Directors:** Sara Berndt,  
Margaret Bradley, Dave Branson, Jean  
Campbell, Carrell Evans, Bill Forrester,  
Stefan Jaronski, Linda Mann, Candy  
Markwald, Gerald J. Navratil, Duane  
Pust and Cami Skinner.

PRESORTED  
STANDARD  
US POSTAGE  
PAID  
SIDNEY MT  
59270  
PERMIT NO 237

## MonDak Heritage Center

120 3rd Ave SE  
Sidney, MT. 59270  
Phone: 406-433-3500  
Fax: 406-433-3503



NOTE new email!  
Email: [mdhc@richland.org](mailto:mdhc@richland.org)  
[www.mondakheritagecenter.org](http://www.mondakheritagecenter.org)

### Hours

Tuesday - Friday 10am - 4pm  
Thursday evening 4pm - 7pm  
Saturdays 1pm - 4pm



*Please check if your Membership needs to be renewed. You will find the expiration on the mailing label.*

### Where Art & History Meet

**Staff:** Sandy Turner - Center Coordinator,  
Leann Pelvit - Administrative Assistant,  
Debi Fox - Experience Works

**Board of Directors:** Sara Berndt,  
Margaret Bradley, Dave Branson, Jean  
Campbell, Carrell Evans, Bill Forrester,  
Stefan Jaronski, Linda Mann, Candy  
Markwald, Gerald J. Navratil, Duane  
Pust and Cami Skinner.

## Music at the MonDak

### TJ Casey

April 4th at 7 pm

**Americana/Western Singer  
Cowboy Poet and Humorist**

**Free for members, \$5  
for non-members**

This acclaimed cowboy poet, musician and entertainer was shaped by his childhood in Montana's remote Pryor Mountains and spent two-thirds of his life in a saddle working with cattle and horses. This gives his words an authenticity impossible to manufacture. When this larger-than-life artist steps under the spotlight and opens his mouth to sing, the cowboy from his soul communicates with you . . . you live the song, the poem, the story. You smell trail dust and campfire smoke. [www.myspace.com/tjcaseycowboy](http://www.myspace.com/tjcaseycowboy)



### Jalan Crossland Band

May 8th at 7:30 pm



Jalan and his band's musical performances are described as an energetic and engaging melding of alt-country, folk, rock and bluegrass influences, combined with irreverent humor, storytelling and a great stage presence. An award winning guitar player, he has been called one of the finest guitarists in America. A native of Wyoming, Jalan has been the opening act on several tours with alt-country legend Robert Earl Keen. He has toured solo and with a band for the past 10 years. [www.myspace.com/jalancrossland](http://www.myspace.com/jalancrossland)

**Free Admission** thanks to the Williston  
Community Enhancement Star Fund

## Music at the MonDak

### TJ Casey

April 4th at 7 pm

**Americana/Western Singer  
Cowboy Poet and Humorist**

**Free for members, \$5  
for non-members**

This acclaimed cowboy poet, musician and entertainer was shaped by his childhood in Montana's remote Pryor Mountains and spent two-thirds of his life in a saddle working with cattle and horses. This gives his words an authenticity impossible to manufacture. When this larger-than-life artist steps under the spotlight and opens his mouth to sing, the cowboy from his soul communicates with you . . . you live the song, the poem, the story. You smell trail dust and campfire smoke. [www.myspace.com/tjcaseycowboy](http://www.myspace.com/tjcaseycowboy)



### Jalan Crossland Band

May 8th at 7:30 pm



Jalan and his band's musical performances are described as an energetic and engaging melding of alt-country, folk, rock and bluegrass influences, combined with irreverent humor, storytelling and a great stage presence. An award winning guitar player, he has been called one of the finest guitarists in America. A native of Wyoming, Jalan has been the opening act on several tours with alt-country legend Robert Earl Keen. He has toured solo and with a band for the past 10 years. [www.myspace.com/jalancrossland](http://www.myspace.com/jalancrossland)

**Free Admission** thanks to the Williston  
Community Enhancement Star Fund

PRESORTED  
STANDARD  
US POSTAGE  
PAID  
SIDNEY MT  
59270  
PERMIT NO 237

- Upcoming Exhibits and Events:
- Loren Acton - April 2nd 7pm
  - TJ Casey - April 4th 7pm
  - Dee Elletson Paper Collage Class  
April 25th 1:30pm
  - Jalan Crossland Band - May 8th 7 :30pm

Apr-May-June 2009

## MonDak Heritage Center: Where Art & History Meet

### President's Letter by Dave Branson, Board President

#### Welcome to our Newly Elected Board Members

We want to welcome Jean Campbell, Carrell Evans, Candy Markwald and Cami Skinner to the board. Each of our new board members impressed me with their passion for different areas of our mission and their willingness to be active board members. Jean was the president's executive secretary at Humboldt State University before moving back to the area and becoming involved at the Center. She brings a diverse skill set to the board. Candy has a passion about helping us develop approaches to better educate and involve school age kids in art, culture and history. Carrell, a former board president, rejoins the board with a passion about our collections management and preservation. Cami is a NE Montana native and works at Wells Fargo Bank. She has an undergrad degree in organizational communications and has worked with non-profit organizations to develop marketing and communication strategies. We also welcome back Margaret Bradley and Duane Pust who were reelected.



Duane Pust, Cami Skinner, Jean Campbell, Carrell Evans, Margaret Bradley (not pictured - Candy Markwald)

#### Congratulations to Bill Forrester

To honor Bill for his many years (actually decades) of tireless service both on the board of directors and at the Center, the board of directors voted to honor Bill by naming him a lifetime emeritus board member. Bill was presented with a plaque at the annual meeting and will continue to be active on the board.

#### Elevator Project is Underway!

The old unsafe freight elevator pictured to the left has been removed and the old cement pad jack hammered out. Walls, framing and electrical service have been added in preparation for the vertical lift. I am very excited that we will have handicap access to the basement history museum within ~ a month. Combined with our new accessible front entry completed last spring, our facility will now be fully accessible to those who can not use stairs. I want to thank everyone who contributed to the \$60,000 project. Two members donated a total of \$33,000. The Foundation For Community Care provided a \$10,000 grant, and both Richland County and the City of Sidney also made significant contributions.

#### Commercial Dishwasher Matching Challenge

We don't have a functional prep area at the Center, which makes it challenging and inefficient at the many events where we serve drinks and snacks. We are in the process of adding a sink and electricity to create a prep area, but we would like to add a commercial dishwasher to rapidly clean and sanitize large numbers of wine glasses and dishes. Although commercial dishwashers are expensive (~\$3200), this will also allow us to stop using disposable glasses and plates. An anonymous member has issued a fundraising challenge and will match all donations 1:1 up to a total of \$1000!! Please help us meet this fundraising challenge by making a donation today - just designate your gift for the dishwasher fund.



MONDAK HERITAGE CENTER

MonDak Historical & Art Society

Apr-May-June 2009

## MonDak Heritage Center: Where Art & History Meet

### President's Letter by Dave Branson, Board President

#### Welcome to our Newly Elected Board Members

We want to welcome Jean Campbell, Carrell Evans, Candy Markwald and Cami Skinner to the board. Each of our new board members impressed me with their passion for different areas of our mission and their willingness to be active board members. Jean was the president's executive secretary at Humboldt State University before moving back to the area and becoming involved at the Center. She brings a diverse skill set to the board. Candy has a passion about helping us develop approaches to better educate and involve school age kids in art, culture and history. Carrell, a former board president, rejoins the board with a passion about our collections management and preservation. Cami is a NE Montana native and works at Wells Fargo Bank. She has an undergrad degree in organizational communications and has worked with non-profit organizations to develop marketing and communication strategies. We also welcome back Margaret Bradley and Duane Pust who were reelected.



Duane Pust, Cami Skinner, Jean Campbell, Carrell Evans, Margaret Bradley (not pictured - Candy Markwald)

#### Congratulations to Bill Forrester

To honor Bill for his many years (actually decades) of tireless service both on the board of directors and at the Center, the board of directors voted to honor Bill by naming him a lifetime emeritus board member. Bill was presented with a plaque at the annual meeting and will continue to be active on the board.

#### Elevator Project is Underway!

The old unsafe freight elevator pictured to the left has been removed and the old cement pad jack hammered out. Walls, framing and electrical service have been added in preparation for the vertical lift. I am very excited that we will have handicap access to the basement history museum within ~ a month. Combined with our new accessible front entry completed last spring, our facility will now be fully accessible to those who can not use stairs. I want to thank everyone who contributed to the \$60,000 project. Two members donated a total of \$33,000. The Foundation For Community Care provided a \$10,000 grant, and both Richland County and the City of Sidney also made significant contributions.

#### Commercial Dishwasher Matching Challenge

We don't have a functional prep area at the Center, which makes it challenging and inefficient at the many events where we serve drinks and snacks. We are in the process of adding a sink and electricity to create a prep area, but we would like to add a commercial dishwasher to rapidly clean and sanitize large numbers of wine glasses and dishes. Although commercial dishwashers are expensive (~\$3200), this will also allow us to stop using disposable glasses and plates. An anonymous member has issued a fundraising challenge and will match all donations 1:1 up to a total of \$1000!! Please help us meet this fundraising challenge by making a donation today - just designate your gift for the dishwasher fund.



MONDAK HERITAGE CENTER

MonDak Historical & Art Society

## Coming Exhibits and Events



Whirlpool Galaxy

### *Heavens Above: Photographs of the Universe from the Hubble Space Telescope*

**March 3rd - May 9th**

This one-of-a kind traveling exhibit is not scheduled for display anywhere else in Montana or North Dakota. It features 29 breathtaking images of the universe taken by the Hubble Space Telescope and presented as large-formatted captioned transparencies mounted in light boxes. Accompanying the exhibit is *View Space*, an internet-fed self-updating kiosk that provides an ever changing kaleidoscope of inspiring and educational presentations of the latest information and most beautiful images in astronomy and space science.

**March 30th - April 17th**

**Star Lab Planetarium at the MonDak  
Heritage Center**

We are inviting area schools to bring their students for field trips, but everyone is encouraged to visit and view the Planetarium.

### **MAGDA Traveling Show**

***Bill Stockton - A Retrospective.***

**April 1st - May  
1st, 2009**

The Stockton Retrospective includes a variety of images showcasing his more than 50 years of work as an artist. Pencil sketches from art school, early watercolors, and a variety of images done in his signature medium of cattle markers make up the exhibit.



### **MonDak Wish List**

- Old City Directories
- Old Landowners Map
- 17" Flat Screen Monitor
- Saturday afternoon and Thursday evening front desk attendants

### **Dee Elletson Paper Collage Class**

**April 25th 1:30pm**

Join Dee Saturday and create your own work of art. Dee will demonstrate her paper collage techniques on either a picture or a vase and you are free to pick either one. Class size is limited so call the MonDak and reserve your spot Cost is \$35 which covers the art materials and instruction. Please bring a small sharp scissors.

### **30th Annual Southeastern Montana Juried Art Exhibit**

**May 5th - May 30th**

On Loan from the Custer County Art & Heritage Center in Miles City. The *Traveling Collection* features 24 works representative of professional and amateur artworks from across Montana and adjoining states. Stockman Bank of Miles City and the William & Lorene Nefsy Foundation co-sponsor the *Juried Exhibit* and the *Traveling Collection* tour with additional support from the Montana Arts Council, the National Endowment for the Arts and the Montana Cultural Trust.



Rock Pocket by Kerry Nagel

## Coming Exhibits and Events



Whirlpool Galaxy

### *Heavens Above: Photographs of the Universe from the Hubble Space Telescope*

**March 3rd - May 9th**

This one-of-a kind traveling exhibit is not scheduled for display anywhere else in Montana or North Dakota. It features 29 breathtaking images of the universe taken by the Hubble Space Telescope and presented as large-formatted captioned transparencies mounted in light boxes. Accompanying the exhibit is *View Space*, an internet-fed self-updating kiosk that provides an ever changing kaleidoscope of inspiring and educational presentations of the latest information and most beautiful images in astronomy and space science.

**March 30th - April 17th**

**Star Lab Planetarium at the MonDak  
Heritage Center**

We are inviting area schools to bring their students for field trips, but everyone is encouraged to visit and view the Planetarium.

### **MAGDA Traveling Show**

***Bill Stockton - A Retrospective.***

**April 1st - May  
1st, 2009**

The Stockton Retrospective includes a variety of images showcasing his more than 50 years of work as an artist. Pencil sketches from art school, early watercolors, and a variety of images done in his signature medium of cattle markers make up the exhibit.



### **MonDak Wish List**

- Old City Directories
- Old Landowners Map
- 17" Flat Screen Monitor
- Saturday afternoon and Thursday evening front desk attendants

### **Dee Elletson Paper Collage Class**

**April 25th 1:30pm**

Join Dee Saturday and create your own work of art. Dee will demonstrate her paper collage techniques on either a picture or a vase and you are free to pick either one. Class size is limited so call the MonDak and reserve your spot Cost is \$35 which covers the art materials and instruction. Please bring a small sharp scissors.

### **30th Annual Southeastern Montana Juried Art Exhibit**

**May 5th - May 30th**

On Loan from the Custer County Art & Heritage Center in Miles City. The *Traveling Collection* features 24 works representative of professional and amateur artworks from across Montana and adjoining states. Stockman Bank of Miles City and the William & Lorene Nefsy Foundation co-sponsor the *Juried Exhibit* and the *Traveling Collection* tour with additional support from the Montana Arts Council, the National Endowment for the Arts and the Montana Cultural Trust.



Rock Pocket by Kerry Nagel

## Center Coordinator's Letter by Sandy Turner

### Why Volunteers Matter

Vol·un·teer *noun (action heroes)*

1. a person who voluntarily offers himself or herself for a service or undertaking.
2. a person who performs a service willingly and without pay.

Since the beginning of the MonDak Historical & Art Society in 1967, the organization has always depended on its dedicated volunteers. Without these volunteers, special events, preservation efforts and historical research would be vastly reduced.

Last year, the MonDak Heritage Center logged close to 5000 hours of volunteer work. That is the equivalent of more than two full-time employees. The Celebrating Chocolate event alone resulted in over 300 hours of volunteer time recorded for food preparations, decorating, set-up/tear-down and final clean up. The MonDak Heritage Center cannot function without its dedicated volunteers - they make this place wonderful to come to! Our sincere thanks go to everyone who volunteers at the MonDak Heritage Center. Your dedication is greatly appreciated.

Will you consider volunteering at the MonDak Heritage Center? We need people to greet guests on Saturday afternoon and Thursday evenings. We also have opportunities in the history library to help preserve the historical data in our files, which need to be reorganized and cataloged. In addition, each new book in the history library needs to be cataloged and labeled. We have a few needs in our clothing preservation efforts, such as sewing padding and covers for hangers, as well as labels sewn inside of clothing. We are also always looking for individuals to help with manual labor, which might include setting up and tearing down for events, helping move large items, and rearranging displays.

We have many other opportunities for volunteering at the MonDak Heritage Center. Stop in and talk to us about a volunteer opportunity that fits your style.

### In-Kind Donations January –March 28

Center Gallery floor transitions—B&B Builders

Storm window replacement and tinting—Turner Construction

#### Celebrating Chocolate:

Bean Bag	Debi Fox	Sarah Parsons	Laura Senior
Joy Barsotti	Martha Gorder	Leann Pelvit	Sidney Country Club
Libby Berndt	Jennie Gwynne	Sarah Parsons	Carmen Simonis
Candy Bouquet	Mary Jeane Johnson	Party Central	Lyn Solberg-Rodier
Deb Bradley	Shelly Kessler	Patty Petrik	Robert & Dora Srygley
Margaret Bradley	LeRoy's Catering	Beth Redlin	Tastefully Simply -
Jean Campbell	Doreen & Heather McDonald	Reynolds Market	Vicki Strasheim
Dee Elletson	Miller's Corner	Nancy Simonsen	Treasured Candy
Carrell Evans	Maryellen Navratil	Julie Dahl-Sabo	Valley View IGA
Finnicum's Furniture	Janice Norby	Sharp & Sassy	White Drug
Mary Forrester	Mo O'Mara	Stacey Schmitt	Hannah Whiteman

#### Refreshments:

Margaret Bradley	Mary Forrester	Mary Jeane Johnson	Leann Pelvit
Jean Campbell	Debi Fox	Mo O'Mara	Carmen Simonis
Carrell Evans	Carolyn Hayden	Janice Norby	

#### Second Impressions:

Deb Bradley	Lois Hackley	Janice Norby	Sandy Turner
Jennie Gwynne	Lily Pad	Lyn Solberg-Rodier	

### 2nd Annual Member's Market (Garage Sale) July 10 7am to 3pm

Mark your calendars and get ready to donate items for our 2nd annual Member's Market. At our sale last year we raised \$900 for preservation from items donated by our supporters. Please consider donating you items. Call to arrange a drop-off time. Household items only please.



## Center Coordinator's Letter by Sandy Turner

### Why Volunteers Matter

Vol·un·teer *noun (action heroes)*

1. a person who voluntarily offers himself or herself for a service or undertaking.
2. a person who performs a service willingly and without pay.

Since the beginning of the MonDak Historical & Art Society in 1967, the organization has always depended on its dedicated volunteers. Without these volunteers, special events, preservation efforts and historical research would be vastly reduced.

Last year, the MonDak Heritage Center logged close to 5000 hours of volunteer work. That is the equivalent of more than two full-time employees. The Celebrating Chocolate event alone resulted in over 300 hours of volunteer time recorded for food preparations, decorating, set-up/tear-down and final clean up. The MonDak Heritage Center cannot function without its dedicated volunteers - they make this place wonderful to come to! Our sincere thanks go to everyone who volunteers at the MonDak Heritage Center. Your dedication is greatly appreciated.

Will you consider volunteering at the MonDak Heritage Center? We need people to greet guests on Saturday afternoon and Thursday evenings. We also have opportunities in the history library to help preserve the historical data in our files, which need to be reorganized and cataloged. In addition, each new book in the history library needs to be cataloged and labeled. We have a few needs in our clothing preservation efforts, such as sewing padding and covers for hangers, as well as labels sewn inside of clothing. We are also always looking for individuals to help with manual labor, which might include setting up and tearing down for events, helping move large items, and rearranging displays.

We have many other opportunities for volunteering at the MonDak Heritage Center. Stop in and talk to us about a volunteer opportunity that fits your style.

### In-Kind Donations January –March 28

Center Gallery floor transitions—B&B Builders

Storm window replacement and tinting—Turner Construction

#### Celebrating Chocolate:

Bean Bag	Debi Fox	Sarah Parsons	Laura Senior
Joy Barsotti	Martha Gorder	Leann Pelvit	Sidney Country Club
Libby Berndt	Jennie Gwynne	Sarah Parsons	Carmen Simonis
Candy Bouquet	Mary Jeane Johnson	Party Central	Lyn Solberg-Rodier
Deb Bradley	Shelly Kessler	Patty Petrik	Robert & Dora Srygley
Margaret Bradley	LeRoy's Catering	Beth Redlin	Tastefully Simply -
Jean Campbell	Doreen & Heather McDonald	Reynolds Market	Vicki Strasheim
Dee Elletson	Miller's Corner	Nancy Simonsen	Treasured Candy
Carrell Evans	Maryellen Navratil	Julie Dahl-Sabo	Valley View IGA
Finnicum's Furniture	Janice Norby	Sharp & Sassy	White Drug
Mary Forrester	Mo O'Mara	Stacey Schmitt	Hannah Whiteman

#### Refreshments:

Margaret Bradley	Mary Forrester	Mary Jeane Johnson	Leann Pelvit
Jean Campbell	Debi Fox	Mo O'Mara	Carmen Simonis
Carrell Evans	Carolyn Hayden	Janice Norby	

#### Second Impressions:

Deb Bradley	Lois Hackley	Janice Norby	Sandy Turner
Jennie Gwynne	Lily Pad	Lyn Solberg-Rodier	

### 2nd Annual Member's Market (Garage Sale) July 10 7am to 3pm

Mark your calendars and get ready to donate items for our 2nd annual Member's Market. At our sale last year we raised \$900 for preservation from items donated by our supporters. Please consider donating you items. Call to arrange a drop-off time. Household items only please.



**MonDak Historical and Art Society**  
**2008 Annual President's Report by Dave Branson**  
**Presented at the Annual Meeting, March 22, 2009**

Much progress was made at the MonDak Heritage Center in the past year. We continue to work to expand our membership, preservation efforts and programming, while shifting to free admission. We have 3 dedicated staff members and many volunteers who care deeply about the mission of the Center. Our staff, headed by the Center Coordinator Sandy Turner, deserves much credit for the continued positive progress at the Center. Our many volunteers also deserve a great deal of recognition and thanks. Membership as of March 1, 2009 was 339, while yearly visitation during 2008 was ~6277. I want to take this time to present a brief summary of MDHC accomplishments.

Building Renovations: 1) New handicap accessible front entry including a new ramp, new front doors and glass, electric door openers, new exterior lights (Funding provided by Richland County); 2) Purchased acoustic curtains to be mounted above the center gallery to improve sound problems and allow us to hold more events (Funding by Richland County); 3) Replaced the existing energy inefficient fluorescent light ballasts that were failing with new energy efficient ballasts and UV light filters; 4) Planned/designed elevator renovation project and raised ~\$60,000 in funding to provide handicap accessibility to the basement (Project underway).

Programming: We continued to work at expanding our programming over the past year. We greatly expanded our Music at the MonDak series and received \$3,000 in grant funding for the series. We also initiated new collaborations with the Sidney Performing Arts Council, which resulted in Members Only music events and one SPAC concert at the Center.

Collections Management and Preservation: 1) Continued to organize and enter collection items and historical photos into Past Perfect, a computer database. Much remains to be done, but we are making progress. 2) Completed stage 1 of the microfilm project, by converting all Sidney Herald microfilms to an electronic PDF format to aid in historical research. 3) We continue to wait for a decision by Richland County on whether the large JK Ralston painting will remain at the Center.

Donations and Grants: We had donations from hundreds of individuals over the past year. A few highlights include: 1) Over \$33,000 in donations from our members for the elevator project; 2) Almost \$23,000 in donations to the endowment fund; 3) ~\$11,000 in donations in response to the year end giving letter. We also received hundreds of other donations – including \$2,500 for our stage and light project. We applied for and received a number of grants including: 1) National Endowment for the Humanities preservation grant (~\$4,600); 2) Foundation for Community Care grant for our elevator project (\$10,000), and 3) Williston Community Enhancement Star Fund Grant for Music at the MonDak (\$3,000). We have also been recommended to receive two years of grant funding from the Montana Cultural Trust.

Finances: The Center remains in sound financial shape. Primary sources of revenue include Richland County, memberships, fundraisers, donations, City of Sidney and grants. To allow us to sustain the increase in programming while continuing preservation efforts, we need to look for ways to increase our revenue flow. Most direct government support pays simply for utilities and administrative costs. We continue to thank Richland County and the City of Sidney for their strong support. Full financial reports are available at the Center for any member.

Board governance progress: 1) Approved a number of new or revised policies including collections policy, endowment fund policy, and board member job description and ethics statement; 2) Amended the bylaws to shift our financial year from December 31<sup>st</sup> to June 30<sup>th</sup> to match the fiscal year of Richland County and the City of Sidney.

**MonDak Historical and Art Society**  
**2008 Annual President's Report by Dave Branson**  
**Presented at the Annual Meeting, March 22, 2009**

Much progress was made at the MonDak Heritage Center in the past year. We continue to work to expand our membership, preservation efforts and programming, while shifting to free admission. We have 3 dedicated staff members and many volunteers who care deeply about the mission of the Center. Our staff, headed by the Center Coordinator Sandy Turner, deserves much credit for the continued positive progress at the Center. Our many volunteers also deserve a great deal of recognition and thanks. Membership as of March 1, 2009 was 339, while yearly visitation during 2008 was ~6277. I want to take this time to present a brief summary of MDHC accomplishments.

Building Renovations: 1) New handicap accessible front entry including a new ramp, new front doors and glass, electric door openers, new exterior lights (Funding provided by Richland County); 2) Purchased acoustic curtains to be mounted above the center gallery to improve sound problems and allow us to hold more events (Funding by Richland County); 3) Replaced the existing energy inefficient fluorescent light ballasts that were failing with new energy efficient ballasts and UV light filters; 4) Planned/designed elevator renovation project and raised ~\$60,000 in funding to provide handicap accessibility to the basement (Project underway).

Programming: We continued to work at expanding our programming over the past year. We greatly expanded our Music at the MonDak series and received \$3,000 in grant funding for the series. We also initiated new collaborations with the Sidney Performing Arts Council, which resulted in Members Only music events and one SPAC concert at the Center.

Collections Management and Preservation: 1) Continued to organize and enter collection items and historical photos into Past Perfect, a computer database. Much remains to be done, but we are making progress. 2) Completed stage 1 of the microfilm project, by converting all Sidney Herald microfilms to an electronic PDF format to aid in historical research. 3) We continue to wait for a decision by Richland County on whether the large JK Ralston painting will remain at the Center.

Donations and Grants: We had donations from hundreds of individuals over the past year. A few highlights include: 1) Over \$33,000 in donations from our members for the elevator project; 2) Almost \$23,000 in donations to the endowment fund; 3) ~\$11,000 in donations in response to the year end giving letter. We also received hundreds of other donations – including \$2,500 for our stage and light project. We applied for and received a number of grants including: 1) National Endowment for the Humanities preservation grant (~\$4,600); 2) Foundation for Community Care grant for our elevator project (\$10,000), and 3) Williston Community Enhancement Star Fund Grant for Music at the MonDak (\$3,000). We have also been recommended to receive two years of grant funding from the Montana Cultural Trust.

Finances: The Center remains in sound financial shape. Primary sources of revenue include Richland County, memberships, fundraisers, donations, City of Sidney and grants. To allow us to sustain the increase in programming while continuing preservation efforts, we need to look for ways to increase our revenue flow. Most direct government support pays simply for utilities and administrative costs. We continue to thank Richland County and the City of Sidney for their strong support. Full financial reports are available at the Center for any member.

Board governance progress: 1) Approved a number of new or revised policies including collections policy, endowment fund policy, and board member job description and ethics statement; 2) Amended the bylaws to shift our financial year from December 31<sup>st</sup> to June 30<sup>th</sup> to match the fiscal year of Richland County and the City of Sidney.

### Invite a Friend to become a Member

Memberships and tax-deductible donations help make the increasing number of exhibitions, special events and shows possible. Please encourage your friends to become members.

- Membership dollars are primarily used for programming and collections preservations.
- CHECK YOUR MAILING LABEL FOR YOUR EXPIRATION DATE

\*We occasionally publish our membership list on our website, in our newsletter and in local papers. If you wish your name to be excluded please let us know.

### 4th Annual Spring Fling April 24th 7pm

Join us for an evening of fun with a live auction featuring fun and interesting yard décor and birdhouses. Many of the items up for bid will be hand crafted items from our generous members and friends of the MonDak as well as items donated by the local businesses. This year's featured talk by Dr. Jerry Kessler, Dr. Dirt, is on spring landscaping tips. Refreshments will be served.

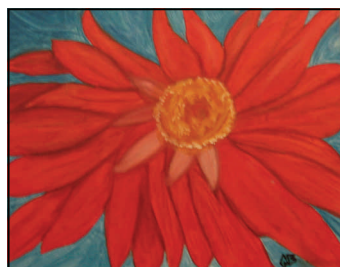
### Youth Art Show May 5th - May 22nd

Sponsored by Edward Jones Financial

Advisors:

Enid Huotari, Jerry Hughes and Nick Lonski

Artwork by 7th to 12th grade students from the surrounding area schools. People's Choice awards will be given in each grade division thanks to Enid Huotari, Jerry Hughes and Nick Lonski. Please stop in and see the excellent youth artists the area has to offer and vote for your favorite drawing, sculptures or painting.



### Your membership counts

	Basic	Supporter
Senior	\$15	\$30
Senior Couple	\$25	\$50
Individual	\$20	\$40
Family	\$35	\$70
Business	\$50	\$100

Sustainer	\$100 to \$249
Sponsor	\$250 to \$499
Patron of the Arts	\$500 to \$999
Benefactor	\$1000 to \$2499
Director's Circle	\$2500 and up

Consider raising your membership support above the basic level, as even an extra \$20 helps. **All support above the minimum level is tax deductible.**

### Bud & Anne Groskinsky Photographic Display



### May 5th -June 30th

Local photographers Bud and Anne Groskinsky will have their photography on display at the MonDak.

*"The world is a beautiful, wonderful place. Bud carries a camera in his pocket at all times; ready to record whatever catches our eye. We like to share our memories of good times with others. We spend time taking pictures in the Badlands of North Dakota and Montana, as well as National Parks." Bud & Anne*

**Please join us for an Open House  
May 7th 5pm -7pm**

### Invite a Friend to become a Member

Memberships and tax-deductible donations help make the increasing number of exhibitions, special events and shows possible. Please encourage your friends to become members.

- Membership dollars are primarily used for programming and collections preservations.
- CHECK YOUR MAILING LABEL FOR YOUR EXPIRATION DATE

\*We occasionally publish our membership list on our website, in our newsletter and in local papers. If you wish your name to be excluded please let us know.

### 4th Annual Spring Fling April 24th 7pm

Join us for an evening of fun with a live auction featuring fun and interesting yard décor and birdhouses. Many of the items up for bid will be hand crafted items from our generous members and friends of the MonDak as well as items donated by the local businesses. This year's featured talk by Dr. Jerry Kessler, Dr. Dirt, is on spring landscaping tips. Refreshments will be served.

### Youth Art Show May 5th - May 22nd

Sponsored by Edward Jones Financial

Advisors:

Enid Huotari, Jerry Hughes and Nick Lonski

Artwork by 7th to 12th grade students from the surrounding area schools. People's Choice awards will be given in each grade division thanks to Enid Huotari, Jerry Hughes and Nick Lonski. Please stop in and see the excellent youth artists the area has to offer and vote for your favorite drawing, sculptures or painting.



### Your membership counts

	Basic	Supporter
Senior	\$15	\$30
Senior Couple	\$25	\$50
Individual	\$20	\$40
Family	\$35	\$70
Business	\$50	\$100

Sustainer	\$100 to \$249
Sponsor	\$250 to \$499
Patron of the Arts	\$500 to \$999
Benefactor	\$1000 to \$2499
Director's Circle	\$2500 and up

Consider raising your membership support above the basic level, as even an extra \$20 helps. **All support above the minimum level is tax deductible.**

### Bud & Anne Groskinsky Photographic Display



### May 5th -June 30th

Local photographers Bud and Anne Groskinsky will have their photography on display at the MonDak.

*"The world is a beautiful, wonderful place. Bud carries a camera in his pocket at all times; ready to record whatever catches our eye. We like to share our memories of good times with others. We spend time taking pictures in the Badlands of North Dakota and Montana, as well as National Parks." Bud & Anne*

**Please join us for an Open House  
May 7th 5pm -7pm**

MonDak Historical & Art Society Membership As of February 28, 2009

Benefactors			
Richland County Commissioners		Blue Rock	Sawyer, Bert
Patron of the Arts			
Bauman, Ann		City of Sidney	Williams, Dolly
Sponsor			
Action Auto		Almond, John	Dr. Michael LaPan
Sustainer			
710 Auto Glass	Ault, Carol	Berndt, Randy & Libby	Branson, Dave
Cummings, Betty	Dailey, Jenasy	Edward Jones - Enid Huotari	Edward Jones - Nick Lonski
Espeland, Erin	Forrester, Bill & Mary	Haffner, Harold	Huffman, Pat Redlin
Lechner, Tim & Patti	Lewis, William	Lueck, Roselyn	Mansheim, Sherry
McMillen, Jerry & Leslie	NAPA Auto Parts	Redlin, Beth & Mocko Dan	Redlin, Jerry & Elsie
Roland, Verne & LaVonne	Sidney Realty Inc.	Torgerson, Ken & Pat	

Business - Basic			
Beagle Properties	Dr. Edward Pierce	Fink Dental	Foundation for Community Care
Froid Public School	Fulkersons Funeral Home	Grenora High School	Mustang Run
Richland Federal Credit Union	Scobey School	Sidney Herald	Sidney Public School
Sidney Sugars	South 40	Sunrise Music	The Roundup

Business - Supporter			
1st Bank	1st Choice Collision	Big Sky Windows	Central Water Conditioning
Electricland	Fairview School	Goss, Jim & Julie	H & R Block
Kentucky Fried Chicken	Lone Tree Lodge	Tri County Implement	

Senior Couple - Basic			
Barber, Bill & Sonya	Barnhart, Clifford & Delores	Bergman, Jerry & Bonnie	Bock, John & Hilda
Carter, Donald & Joyce	Cerkovnik, Mike & Jean	Cummings, Charles & Ann	DeVries, Johnsie & Norma
Dige, Albert & Zelma	Emly, Albert & Irene	Forcella, Rick & Linda	Franz, Ray & Ann
Gable, Tom & Aneta	Garman, Larry & Kathy	Gasper, George & Sandra	Goebel, Darrell & Doris
Goss, Bob & Marcia	Howard, Stan & Dora	Hundtofte, Reuben & Irene	Johnson, Harry & Donna
Johnson, Paul & Barb	Klasna, Ken & Jennie	Lange, Robert & Nesha	Larson, Larry & Winifred
Larson, Merlyn & Jen	McGinnis, Robert & Joyce	Miller, Greg & Linette	Miller, Leo & Shirley
Obergfell, Jerry & Nancy	Peterson, Ivan & Beverley	Price, Craig & Anita	Rasmussen, Curtis & Florence
Redlin, Richard & Constance	Rees, Don & Roxy	Rudie, Sigurd Jr & Joyce	Sorenson, Harold & Margaret
Sowle, Clifton & Alberta	Steinbeisser, Donald & Amelia		Swenson, George & Doris
Valnes, Ernie & Shirley	Weideman, Doran & Ramona		Zimmerman, Bill & Susan

Senior Couple - Supporter			
Basta, James & Cathy	Bostrom, Keith & Paula	Braun, Don & Rita	Drescher, Pat & Mavis Schledewitz
Dreyer, Stanley & Evelyn	Evans, Bob & Carrell	Groskinsky, Albert & Anne	Iversen, Mark & Kathy
Jensen, Harry & Lucille	Madison, Bill & Shari	Osterman, Mike & Sylvia	Peterson, Lyle & Avis
Pust, Duane & Katie	Rauschendorfer, Betty	Rittal, Jimmie & Mae	Vaira, James
Wheeler, Martha			

Senior - Basic			
Adams, Kay	Cayko, Frances	Christensen, Louise	Cummins, Clarence
Dahl, Joyce	Daniels, Laura	Elletson, Dee	Ellwein, Gracie
Erickson, Doris	Franck, Ann	Gabrielson, Elda	Gierke, Helen
Hackley, Lois	Hall, Robert	Hardy, Linda	Helgeson, Gloria
Iversen, Louise	Kemmis, Verna	Klasna, Joe	Knudsen, Elva May
Krause, Jean	Mann, Linda	Martin, Ruth	McMullin, Laura
Minch, Mary Ann	Minow, Harriett	Olsen, Gerald	Payette, Charlotte
Raffaell, Ramona	Rasmussen, Ellen	Rounce, Betty	Scordalakes, George
Shannon, Vida	Shinnick, Ned	Stradtman, Ethelyn	Sundheim, Audry
Thiessen, Ailee	Thirud, Jean	Watts, Kathryn	Wilder, Mildred/ Blondie
Williams, Janice			

MonDak Historical & Art Society Membership As of February 28, 2009

Benefactors			
Richland County Commissioners		Blue Rock	Sawyer, Bert
Patron of the Arts			
Bauman, Ann		City of Sidney	Williams, Dolly
Sponsor			
Action Auto		Almond, John	Dr. Michael LaPan
Sustainer			
710 Auto Glass	Ault, Carol	Berndt, Randy & Libby	Branson, Dave
Cummings, Betty	Dailey, Jenasy	Edward Jones - Enid Huotari	Edward Jones - Nick Lonski
Espeland, Erin	Forrester, Bill & Mary	Haffner, Harold	Huffman, Pat Redlin
Lechner, Tim & Patti	Lewis, William	Lueck, Roselyn	Mansheim, Sherry
McMillen, Jerry & Leslie	NAPA Auto Parts	Redlin, Beth & Mocko Dan	Redlin, Jerry & Elsie
Roland, Verne & LaVonne	Sidney Realty Inc.	Torgerson, Ken & Pat	

Business - Basic			
Beagle Properties	Dr. Edward Pierce	Fink Dental	Foundation for Community Care
Froid Public School	Fulkersons Funeral Home	Grenora High School	Mustang Run
Richland Federal Credit Union	Scobey School	Sidney Herald	Sidney Public School
Sidney Sugars	South 40	Sunrise Music	The Roundup

Business - Supporter			
1st Bank	1st Choice Collision	Big Sky Windows	Central Water Conditioning
Electricland	Fairview School	Goss, Jim & Julie	H & R Block
Kentucky Fried Chicken	Lone Tree Lodge	Tri County Implement	

Senior Couple - Basic			
Barber, Bill & Sonya	Barnhart, Clifford & Delores	Bergman, Jerry & Bonnie	Bock, John & Hilda
Carter, Donald & Joyce	Cerkovnik, Mike & Jean	Cummings, Charles & Ann	DeVries, Johnsie & Norma
Dige, Albert & Zelma	Emly, Albert & Irene	Forcella, Rick & Linda	Franz, Ray & Ann
Gable, Tom & Aneta	Garman, Larry & Kathy	Gasper, George & Sandra	Goebel, Darrell & Doris
Goss, Bob & Marcia	Howard, Stan & Dora	Hundtofte, Reuben & Irene	Johnson, Harry & Donna
Johnson, Paul & Barb	Klasna, Ken & Jennie	Lange, Robert & Nesha	Larson, Larry & Winifred
Larson, Merlyn & Jen	McGinnis, Robert & Joyce	Miller, Greg & Linette	Miller, Leo & Shirley
Obergfell, Jerry & Nancy	Peterson, Ivan & Beverley	Price, Craig & Anita	Rasmussen, Curtis & Florence
Redlin, Richard & Constance	Rees, Don & Roxy	Rudie, Sigurd Jr & Joyce	Sorenson, Harold & Margaret
Sowle, Clifton & Alberta	Steinbeisser, Donald & Amelia		Swenson, George & Doris
Valnes, Ernie & Shirley	Weideman, Doran & Ramona		Zimmerman, Bill & Susan

Senior Couple - Supporter			
Basta, James & Cathy	Bostrom, Keith & Paula	Braun, Don & Rita	Drescher, Pat & Mavis Schledewitz
Dreyer, Stanley & Evelyn	Evans, Bob & Carrell	Groskinsky, Albert & Anne	Iversen, Mark & Kathy
Jensen, Harry & Lucille	Madison, Bill & Shari	Osterman, Mike & Sylvia	Peterson, Lyle & Avis
Pust, Duane & Katie	Rauschendorfer, Betty	Rittal, Jimmie & Mae	Vaira, James
Wheeler, Martha			

Senior - Basic			
Adams, Kay	Cayko, Frances	Christensen, Louise	Cummins, Clarence
Dahl, Joyce	Daniels, Laura	Elletson, Dee	Ellwein, Gracie
Erickson, Doris	Franck, Ann	Gabrielson, Elda	Gierke, Helen
Hackley, Lois	Hall, Robert	Hardy, Linda	Helgeson, Gloria
Iversen, Louise	Kemmis, Verna	Klasna, Joe	Knudsen, Elva May
Krause, Jean	Mann, Linda	Martin, Ruth	McMullin, Laura
Minch, Mary Ann	Minow, Harriett	Olsen, Gerald	Payette, Charlotte
Raffaell, Ramona	Rasmussen, Ellen	Rounce, Betty	Scordalakes, George
Shannon, Vida	Shinnick, Ned	Stradtman, Ethelyn	Sundheim, Audry
Thiessen, Ailee	Thirud, Jean	Watts, Kathryn	Wilder, Mildred/ Blondie
Williams, Janice			

### Senior - Supporter

Albin, Ethel	Bahls, Lilburn	Berry, Wayne & Sharon	Bieber, Carol
Craig, Barb	Cundiff, Clara	Dige, Nels	Fulkerson, Kay
Gladowski, Diane	Jensen, Dallas	Johnson, Hubert	Johnson, Mary Jeane
Kvaalen, Ruth	Lindblom, Stanley	Moore, Mary	Norby, Janice
Opsta, Clarice	Pavek, Harve	Petersen, Astrid	Rhines, Jeanette

### Family - Basic

Altizer, Jeff & Lynn	Baisch, Brad & Monica	Beenken, Eric & Karen Olson	Bennion, Brett & Daniela
Benson, Bruce & Cheryl	Burnison, Robert & Valerie	Casey, Loran & Bernette	Cayko, Richard & Patricia
Dasinger, Kirby & Julie	Edward Jones - Jerry Hughes	Faul, Greg & Wanda	Fink, Bill & Sandy
Gifford, Chip & Kris	Halvorsen, Mark & Osland, Cindy		Harper, Bill & Karolyn
Hill, David & Julie	Iversen, Ruth	Jaronski, Stefan & Jenny Gwynne	Johnson, Phil & Joy
Johnson, Randy & Kelly	Johnson, Warren & Judy	Klasna, Tim & Kim	Lang, Dean & Jeanne
Larson, Tim & Brenda	Leland, Jodie	Lloyd, Jeremy	Markwald, Russ & Candy
Mead, Jeff	Meehan, David & Diana	Meldahl, Terry & Synneva	Miller, Leland & Jill
Neiss, William & Patricia	Nelson, Gary & Linda	Norby, Jeremy & Lorilee	Obermeyer, Lynn & Christensen, John
Rehbein, William & Christina	Rehbein/Carranza, Julie & Juanita		Parsons, Sarah & Gaskins, John
Schwab, Dan & Deniece	Skinner, Jon & Cami	Sons of Norway	Steinbeisser, William & Linda
Strupp, Brad	Turner, Stan & Sandy	Van Every, Wade & Cheryl	Weber, Mike & Rosemary
Yockim, Steve & Gloria	Young, Loren & Jacki	Zadow, Delbert & Margo	

### Family - Supporter

Becker, Ted & Linda	Hill, Doug & Jill	Kallevig, Kendal & Bec	Larsen, Erik & Belinda
Nelson, Darren & Cara	Pelvit, Jim & Leann	Redlin, Jon & Karen	Staffanson, Scott & Gail
Stennes, Ken	Vaira, Vicki	Warner, David & Shelee	

### Individual - Basic

Anderson, Roger	Badt, Idelle	Baker, David	Benton, Danielia
Berndt, Sara	Goss, Kris	Hall, Roberta	Hammer, Carolyn
Hearron, Carol	Hier, Richard & Gloria	Johnson, Scott	Kaufmann, Paul
Klasna, Darcy	Messer, Leslie	Olson, Mary	Schmitz, Kevin
Simonis, Carmen	Simonsen, Nancy	Weaver, Carol	Winter, Pat
York, Wayne	Zadow, Terri		

### Individual - Supporter

Jabro, Jay	Nelson, Joan	O'Mara, Mo	Rudiger, Donna Swank
Rupp, Linda	Senior, Laura		

### Memorials and Donations Received January - March 21, 2009

<b>Edna Dahl Beierle</b> Marvellee Fink	<b>Mabel Jones</b> Brad & Monica Baisch	<b>Connie Ronningen</b> Marvellee Fink	<b>Celebrating Chocolate</b> Linda Mann
<b>Mike Dahl</b> Doris Galleske	Verne & LaVonne Roland	Bill & Sheri Madison	Stockman Bank
<b>Dora Dobas</b> Doris Galleske	Steve & Cynthia Vitt	<b>Claude Scheff</b> Marvellee Fink	<b>Commercial Dishwasher</b> Anonymous
<b>Barbara Nichols Eakin</b> Norma Mitten	<b>Lawrance Kristenson</b> Anne Koch	Richland County Commissioners	Groskinsky Foundation
<b>Perry Elletson</b> Doris Galleske	<b>Joe Maltese</b> Bill & Mary Forrester	<b>Pat Smith</b> Marvellee Fink	Robert & Dora Srygley
<b>Elsie Eschenbacher</b> Rance & Colleen Haralson	<b>Victor Marker</b> Verne & LaVonne Roland	Donald & Michelle Frank	<b>Endowment</b> <b>Claude Scheff</b>
Harold Thogersen	<b>Steve Miller</b> Doris Galleske	<b>Ordean Solberg</b> Anne Koch	Mark & Diane Binder
<b>Darrell Erickson</b> Mary Bieber	<b>JoAnne Oakland</b> Blondie Wilder	Steve & Cynthia Vitt	<b>General Donation Fund</b> Francine York
Doris Erickson	<b>David Paulson</b> Anne Koch	<b>Clarence Steffen</b> John Steffen	<b>Microfilm &amp; Historic Preservation</b>
<b>Alvin Filler</b> Albert & Irene Emly	Steve & Cynthia Vitt	<b>Viola Wick</b> Doris Galleske	Laura McMullin
Marvellee Fink	<b>Milo Payette</b> Doris Galleske		Hubert & Arlene Suko
		<b>Chairs</b> <b>David Paulson</b>	<b>Stage and Lights</b> <b>Louette Damm</b>
		Enid Huotari - Edward Jones	Elda Gabrielson

### Senior - Supporter

Albin, Ethel	Bahls, Lilburn	Berry, Wayne & Sharon	Bieber, Carol
Craig, Barb	Cundiff, Clara	Dige, Nels	Fulkerson, Kay
Gladowski, Diane	Jensen, Dallas	Johnson, Hubert	Johnson, Mary Jeane
Kvaalen, Ruth	Lindblom, Stanley	Moore, Mary	Norby, Janice
Opsta, Clarice	Pavek, Harve	Petersen, Astrid	Rhines, Jeanette

### Family - Basic

Altizer, Jeff & Lynn	Baisch, Brad & Monica	Beenken, Eric & Karen Olson	Bennion, Brett & Daniela
Benson, Bruce & Cheryl	Burnison, Robert & Valerie	Casey, Loran & Bernette	Cayko, Richard & Patricia
Dasinger, Kirby & Julie	Edward Jones - Jerry Hughes	Faul, Greg & Wanda	Fink, Bill & Sandy
Gifford, Chip & Kris	Halvorsen, Mark & Osland, Cindy		Harper, Bill & Karolyn
Hill, David & Julie	Iversen, Ruth	Jaronski, Stefan & Jenny Gwynne	Johnson, Phil & Joy
Johnson, Randy & Kelly	Johnson, Warren & Judy	Klasna, Tim & Kim	Lang, Dean & Jeanne
Larson, Tim & Brenda	Leland, Jodie	Lloyd, Jeremy	Markwald, Russ & Candy
Mead, Jeff	Meehan, David & Diana	Meldahl, Terry & Synneva	Miller, Leland & Jill
Neiss, William & Patricia	Nelson, Gary & Linda	Norby, Jeremy & Lorilee	Obermeyer, Lynn & Christensen, John
Rehbein, William & Christina	Rehbein/Carranza, Julie & Juanita		Parsons, Sarah & Gaskins, John
Schwab, Dan & Deniece	Skinner, Jon & Cami	Sons of Norway	Steinbeisser, William & Linda
Strupp, Brad	Turner, Stan & Sandy	Van Every, Wade & Cheryl	Weber, Mike & Rosemary
Yockim, Steve & Gloria	Young, Loren & Jacki	Zadow, Delbert & Margo	

### Family - Supporter

Becker, Ted & Linda	Hill, Doug & Jill	Kallevig, Kendal & Bec	Larsen, Erik & Belinda
Nelson, Darren & Cara	Pelvit, Jim & Leann	Redlin, Jon & Karen	Staffanson, Scott & Gail
Stennes, Ken	Vaira, Vicki	Warner, David & Shelee	

### Individual - Basic

Anderson, Roger	Badt, Idelle	Baker, David	Benton, Danielia
Berndt, Sara	Goss, Kris	Hall, Roberta	Hammer, Carolyn
Hearron, Carol	Hier, Richard & Gloria	Johnson, Scott	Kaufmann, Paul
Klasna, Darcy	Messer, Leslie	Olson, Mary	Schmitz, Kevin
Simonis, Carmen	Simonsen, Nancy	Weaver, Carol	Winter, Pat
York, Wayne	Zadow, Terri		

### Individual - Supporter

Jabro, Jay	Nelson, Joan	O'Mara, Mo	Rudiger, Donna Swank
Rupp, Linda	Senior, Laura		

### Memorials and Donations Received January - March 21, 2009

<b>Edna Dahl Beierle</b> Marvellee Fink	<b>Mabel Jones</b> Brad & Monica Baisch	<b>Connie Ronningen</b> Marvellee Fink	<b>Celebrating Chocolate</b> Linda Mann
<b>Mike Dahl</b> Doris Galleske	Verne & LaVonne Roland	Bill & Sheri Madison	Stockman Bank
<b>Dora Dobas</b> Doris Galleske	Steve & Cynthia Vitt	<b>Claude Scheff</b> Marvellee Fink	<b>Commercial Dishwasher</b> Anonymous
<b>Barbara Nichols Eakin</b> Norma Mitten	<b>Lawrance Kristenson</b> Anne Koch	Richland County Commissioners	Groskinsky Foundation
<b>Perry Elletson</b> Doris Galleske	<b>Joe Maltese</b> Bill & Mary Forrester	<b>Pat Smith</b> Marvellee Fink	Robert & Dora Srygley
<b>Elsie Eschenbacher</b> Rance & Colleen Haralson	<b>Victor Marker</b> Verne & LaVonne Roland	Donald & Michelle Frank	<b>Endowment</b> <b>Claude Scheff</b>
Harold Thogersen	<b>Steve Miller</b> Doris Galleske	<b>Ordean Solberg</b> Anne Koch	Mark & Diane Binder
<b>Darrell Erickson</b> Mary Bieber	<b>JoAnne Oakland</b> Blondie Wilder	Steve & Cynthia Vitt	<b>General Donation Fund</b> Francine York
Doris Erickson	<b>David Paulson</b> Anne Koch	<b>Clarence Steffen</b> John Steffen	<b>Microfilm &amp; Historic Preservation</b>
<b>Alvin Filler</b> Albert & Irene Emly	Steve & Cynthia Vitt	<b>Viola Wick</b> Doris Galleske	Laura McMullin
Marvellee Fink	<b>Milo Payette</b> Doris Galleske		Hubert & Arlene Suko
		<b>Chairs</b> <b>David Paulson</b>	<b>Stage and Lights</b> <b>Louette Damm</b>
		Enid Huotari - Edward Jones	Elda Gabrielson